

AMB-HMS ADJUSTABLE MOUNT BRACKET

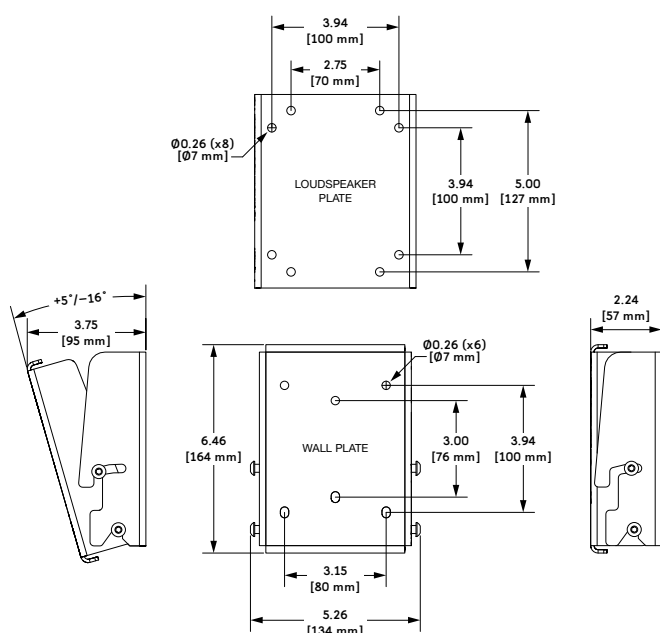


AMB-HMS Bracket Kit

The AMB-HMS adjustable mount bracket mounts HMS surround loudspeakers on walls with uptilt or downtilt. The available tilt depends on the HMS loudspeaker model mounted (see Table 1 on next page). When installed with no tilt, the bracket mounts loudspeakers 2.24 inches (57 mm) from the wall.



CAUTION: The AMB-HMS adjustable mount bracket is not rated for overhead mounting. Only wall mounts are supported. For overhead mounting, additional mounting options, including U-brackets and yokes, are available from Meyer Sound.



AMB-HMS Bracket Dimensions

When purchased separately, the AMB-HMS bracket ships with the following items.

AMB-HMS Bracket Kit, PN 40.198.041.01

Loudspeaker	Part Number	Quantity
AMB-HMS wall plate	64.242.031.01	1
AMB-HMS loudspeaker plate	64.242.032.01	1
1/4-20 x 1.0" screws	101.620	8
0.25" lock washers	115.501	4
12" safety lanyard	124.124	1
Loctite® 243 thread locker	640.096	1



NOTE: When ordering the HMS loudspeaker with an AMB-HMS bracket, the bracket is factory installed and attached to the loudspeaker.

AMB-HMS Bracket Load Ratings

- 7:1 safety rating, 65 lbs (29.5 kg) (one HMS loudspeaker)

Important Safety Considerations!

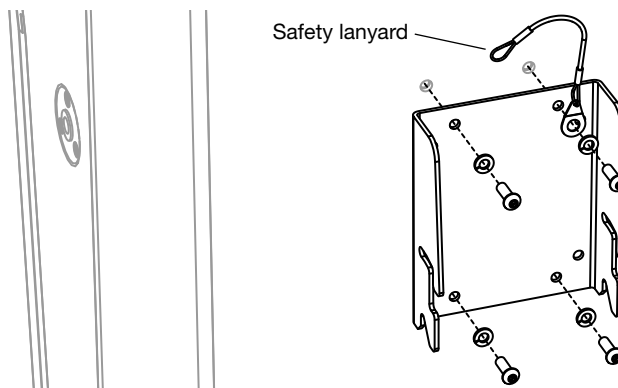
When mounting Meyer Sound loudspeakers, the following precautions should always be observed:

- All Meyer Sound products must be used in accordance with local, state, federal, and industry regulations. It is the owner's and user's responsibility to evaluate the reliability of any rigging or mounting method for their application. Rigging should only be carried out by experienced professionals.
- Use mounting and rigging hardware that has been rated to meet or exceed the weight being hung.
- Make sure to attach mounting hardware to the building's structural components (studs or joists), and not just to the wall surface. Verify that the building's structure and the anchors used for the installation will safely support the total weight of the mounted loudspeakers.
- Use mounting hardware appropriate for the surface where the loudspeaker will be installed.
- Make sure bolts are tightened securely. Meyer Sound recommends using Loctite on bolt threads and safety cables.
- Inspect mounting and rigging hardware regularly. Immediately replace any worn or damaged components.

Installing the AMB-HMS Bracket

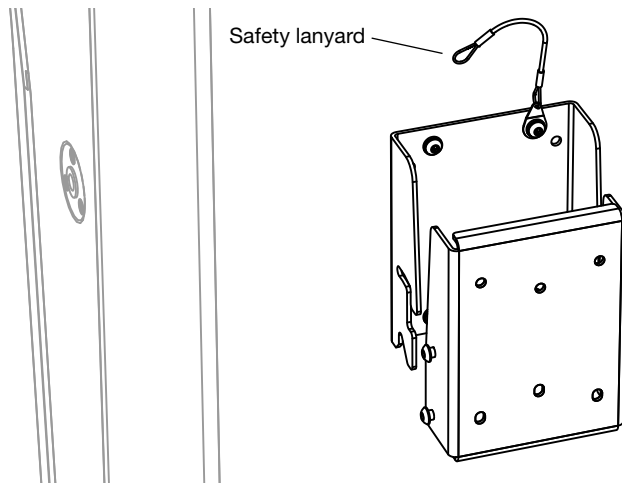
To install the AMB-HMS bracket:

1. If the AMB-HMS bracket was *not* factory installed, remove the four screws from the rear of the HMS loudspeaker. Secure the loudspeaker plate to the cabinet with the four screws (PN 101.620) and four lock washers (115.501) included with the bracket kit. Apply Loctite (PN 640.096) to the screw threads before installing.



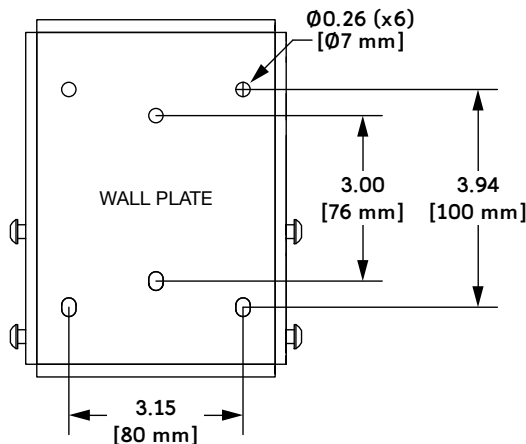
CAUTION: If your region's safety regulations require a safety cable, attach the included safety lanyard (PN 124.124) to one of the top screws, positioning it outside the loudspeaker plate and inside the washer.

- If the AMB-HMS bracket was factory installed, loosen the four side screws (do not remove the screws) and separate the wall plate from the loudspeaker plate. Leave the loudspeaker plate attached to the loudspeaker.



CAUTION: If your region's safety regulations require a safety cable, attach the included safety lanyard (PN 124.124) to one of the top screws. Use caution when removing the screw so it does not become stripped (Loctite is applied at the factory). Reapply Loctite (PN 640.096) to the screw threads before attaching the lanyard. Position the lanyard outside the loudspeaker plate and inside the washer.

- Mount the AMB-HMS wall plate on a wall:
 - Mark mounting holes on the wall using the wall plate's mounting holes as a guide. When mounting on studs, use the two center holes, otherwise, use the four corner holes.



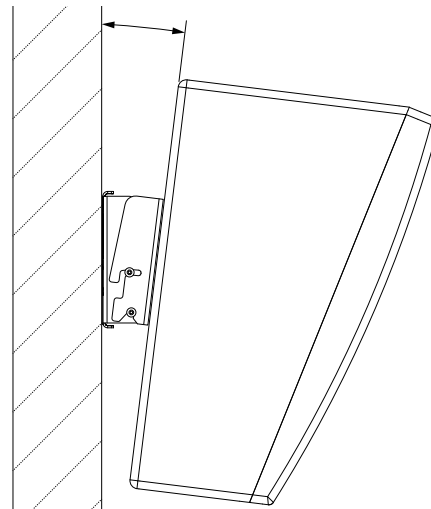
- Drill pilot holes at the marked locations.
- Secure the wall plate to the wall with fasteners suitable for the intended application. Use only screws and anchors appropriate for the mounting surface and rated to meet or exceed the weight being hung (65 lbs, 29.5 kg).

ate for the mounting surface and rated to meet or exceed the weight being hung (65 lbs, 29.5 kg).

- Hang the HMS loudspeaker on the wall by carefully sliding the loudspeaker plate (attached to the loudspeaker) down onto the wall plate so its four side screws rest in the loudspeaker plate's four side slots.
- If using the safety lanyard, attach its other end to a safety cable, or secure it to the wall with mounting hardware appropriate for the mounting surface and rated to meet or exceed the weight being hung (65 lbs, 29.5 kg).
- Adjust the tilt of the HMS loudspeaker for the desired coverage. Maximum uptilt and downtilt angles are shown below.

Table 1: AMB-HMS Maximum Tilt

Loudspeaker	Maximum Uptilt	Maximum Downtilt
HMS-5	+5°	-16°
HMS-10	+5°	-13°
HMS-12	+5°	-10°
HMS-15	+5°	-8°



- Apply Loctite to the threads of the four side screws and completely tighten the screws so the loudspeaker won't move from its desired tilt.

CAUTION: When mounting HMS loudspeakers in soffits, allow at least 3 inches above the loudspeaker for the bracket to slide into place. The extra space is also required for ventilation for the loudspeaker's amplifier and heat sink.

NOTE: When mounting HMS loudspeakers in soffits, allow sufficient space around the loudspeaker so its coverage pattern is unobstructed by the walls of the soffit.