

MDM-5000 High-Power Distribution Module



The 3-phase MDM-5000 high-power distribution module provides convenient and flexible routing of up to six channels of audio, AC power, and RMS™ to Meyer Sound loudspeaker systems. Optimized for integration with LEO Family loudspeakers, the MDM-5000 is part of a complete solution that speeds setup, simplifies cable runs, and standardizes connectivity across systems. This module is available in U.S. and E.U. versions.

The MDM-5000 offers multiple ways to route power and audio. The front panel features standard connectors for audio and power multicables, while the rear panel offers discrete audio, RMS, and power connectors. Audio and power cabling packages for a range of LEO Family and ULTRA series loudspeaker configurations are available from Meyer Sound.

For more information about distribution modules and cables, contact Meyer Sound Technical Support. To assist in system design, a power calculator for Meyer Sound power distribution modules is provided at www.meyersound.com.

Power Distribution

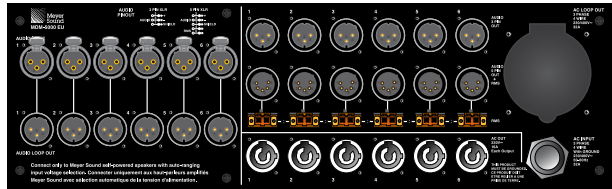
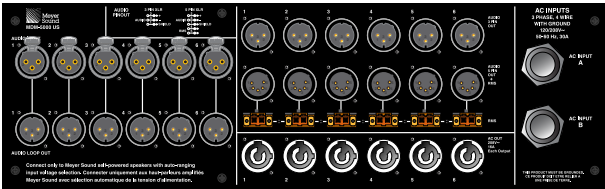
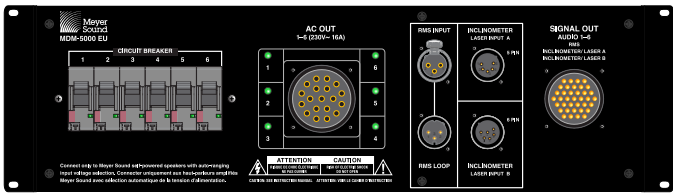
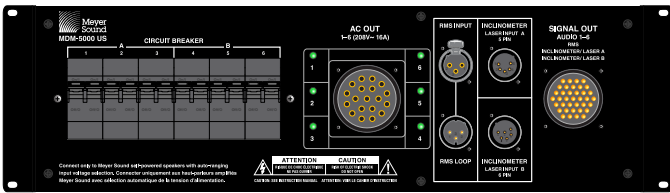
The MDM-5000 makes six independent AC circuits available through a Socapex multi-pin connector and six powerCON connectors. Each circuit can power multiple loudspeakers on both connectors, and is protected by a front-panel circuit breaker.

Audio Distribution

Audio inputs to the MDM-5000 include loop outputs for patching input signals to adjacent inputs, allowing system signal routing at the rear panel. The MDM-5000 supports both 3-pin (balanced audio) and 5-pin (balanced audio and RMS) output connections. An LK37 multi-pin connector integrates balanced audio, RMS, and laser inclinometer connections.

MDM-5000 HIGH-POWER DISTRIBUTION MODULE

The MDM-5000 is housed in a 3-space, 19-inch rackmount enclosure with adjustable front brackets to mount the unit in either a flush or recessed position. For additional support, the MDM-5000 ships with two rear rackmount brackets that accommodate rack depths of 18–24 inches. Optional, short rack ear slides (PN 40.257.100.01) that accommodate rack depths of 16–20 inches are available from Meyer Sound. Two MDM-5000 models are available: the U.S. model features two L21-30 AC power connectors and six 20 A circuit breakers; the E.U. model features a CEE 32A AC power connector with loop output and six 16 A circuit breakers.



MDM-5000 U.S.

Part Number	Description
09.257.001.01	(US) MDM-5000 high-power distribution module <ul style="list-style-type: none"> • (2) L21-30

MDM-5000 E.U.

Part Number	Description
09.257.001.02	(EU) MDM-5000 high-power distribution module <ul style="list-style-type: none"> • (1) CEE 32A with loop output

MDM-5000 CABLES

Cables include single and multichannel power and signal cables that connect the MDM-5000 to fanouts. E.U. Socapex power cables utilize 2.5 mm² cable; U.S. Socapex power cables utilize 12 AWG cable.



Socapex Power Cable

Part Number	Description
28.257.011.01	(EU) Socapex 19-pin power cable, 15 m
28.257.011.02	(EU) Socapex 19-pin power cable, 30 m
28.257.011.03	(US) Socapex 19-pin power cable, 50 ft
28.257.011.04	(US) Socapex 19-pin power cable, 100 ft

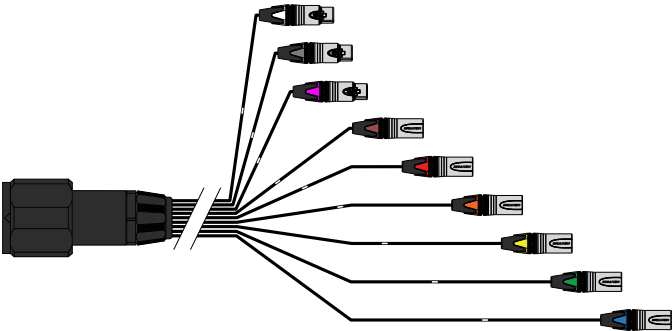


LK37 Signal Cable

Part Number	Description
28.257.012.01	(EU) LK37 37-pin signal cable, 15 m
28.257.012.02	(EU) LK37 37-pin signal cable, 30 m

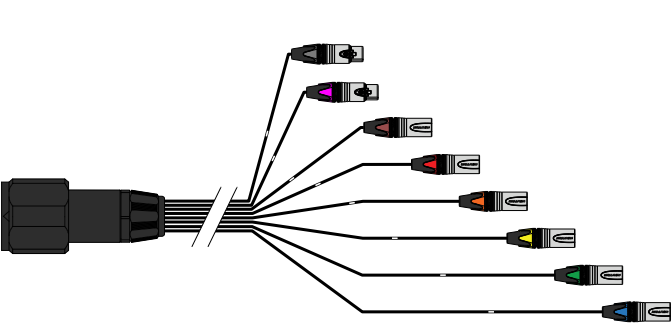
MDM-5000 SIGNAL FANOUTS

Signal fanouts connect multicore signal cables to sets of loudspeakers. Signal fanouts utilize XLR connectors to carry balanced audio, RMS, and connect to laser inclinometers.



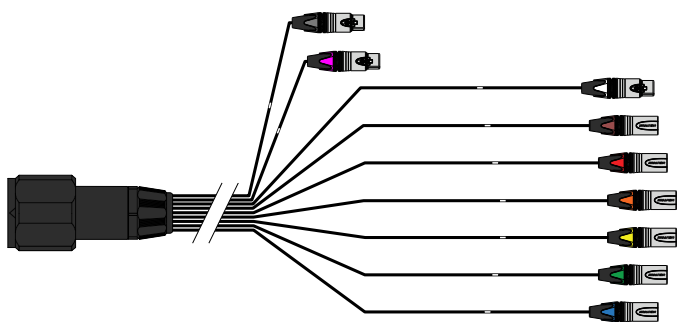
Signal Fanout (3-pin, Staggered)

Part Number	Description
28.257.017.01	(EU & US) LK37 signal fanout cable, staggered length <ul style="list-style-type: none">• (6) XLR 3-pin male audio, 90–317 cm• (1) XLR 3-pin female RMS, 70 cm• (1) XLR 5-pin female Recline laser, 70 cm• (1) XLR 6-pin female ProSight laser, 70 cm

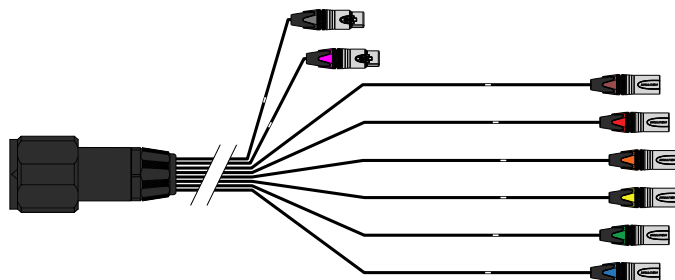


Signal Fanout (5-pin, Staggered)

Part Number	Description
28.257.018.01	(EU & US) LK37 signal fanout cable, staggered length <ul style="list-style-type: none">• (6) XLR 5-pin male audio/RMS, 90–317 cm• (1) XLR 5-pin female Recline laser, 70 cm• (1) XLR 6-pin female ProSight laser, 70 cm

*Signal Subfill Fanout (3-pin, Equal)*

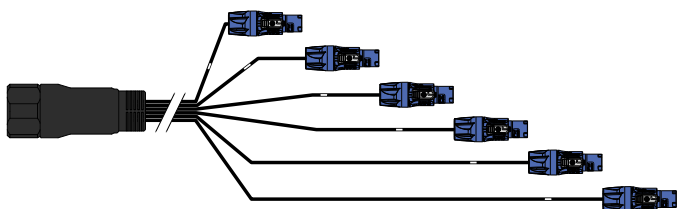
Part Number	Description
28.257.019.01	(EU & US) LK37 signal fanout cable, equal length <ul style="list-style-type: none"> • (6) XLR 3-pin male audio, 6 m • (1) XLR 3-pin female RMS, 6 m • (1) XLR 5-pin female Recline laser, 70 cm • (1) XLR 6-pin female ProSight laser, 70 cm

*Signal Subfill Fanout (5-pin, Equal)*

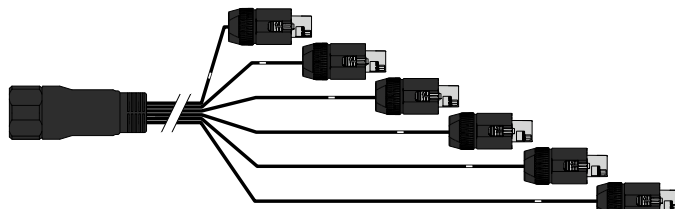
Part Number	Description
28.257.020.01	(EU & US) LK37 signal fanout cable, equal length <ul style="list-style-type: none"> • (6) XLR 5-pin male audio/RMS, 6 m • (1) XLR 5-pin female Recline laser, 70 cm • (1) XLR 6-pin female ProSight laser, 70 cm

MDM-5000 POWER FANOUTS

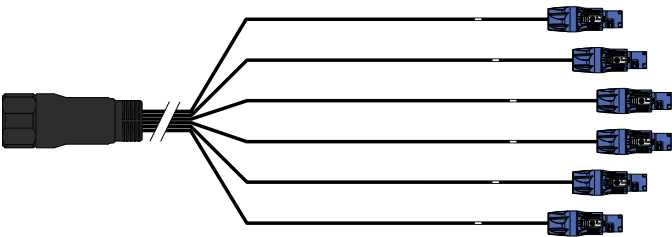
Power fanouts connect multicore power cables to sets of loudspeakers. E.U. power fanouts utilize powerCON connectors and 2.5 mm² cable; U.S. power fanouts utilize powerCON connectors and 12 AWG cable.

*LEOPARD Power Fanout (powerCON 20, Staggered)*

Part Number	Description
28.257.013.01	(EU) Socapex power fanout cable, staggered length <ul style="list-style-type: none"> • (6) powerCON 20 male, 90–317 cm
28.257.013.02	(US) Socapex power fanout cable, staggered length <ul style="list-style-type: none"> • (6) powerCON 20 male, 3–10 ft

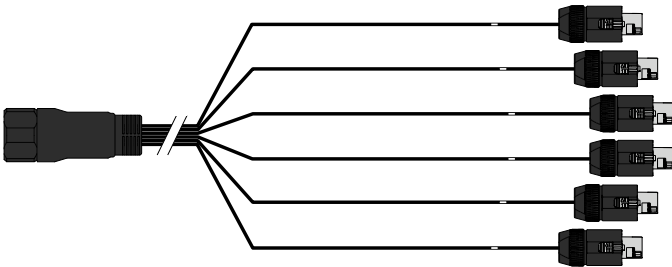
*LEO/LYON Power Fanout (powerCON 32, Staggered)*

Part Number	Description
28.257.014.01	(EU) Socapex power fanout cable, staggered length <ul style="list-style-type: none"> • (6) powerCON 32 male, 90–317 cm
28.257.014.02	(US) Socapex power fanout cable, staggered length <ul style="list-style-type: none"> • (6) powerCON 32 male, 3–10 ft



LEOPARD Power Subfill Fanout (powerCON 20, Equal)

Part Number	Description
28.257.015.01	(EU) Socapex power fanout cable, equal length <ul style="list-style-type: none">• (6) powerCON 20 male, 6 m
28.257.015.02	(US) Socapex power fanout cable, equal length <ul style="list-style-type: none">• (6) powerCON 20 male, 20 ft

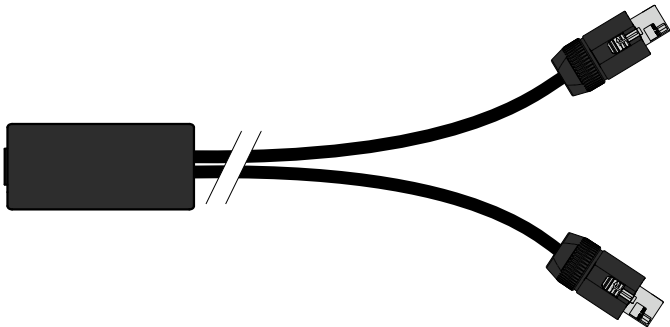


LEO/LYON Power Subfill Fanout (powerCON 32, Equal)

Part Number	Description
28.257.016.01	(EU) Socapex power fanout cable, equal length <ul style="list-style-type: none">• (6) powerCON 32 male, 6 m
28.257.016.02	(US) Socapex power fanout cable, equal length <ul style="list-style-type: none">• (6) powerCON 32 male, 20 ft

MDM-5000 LOOPING POWER AND ADAPTER CABLES

The MDM-5000 power adapter cable splits a powerCON 32 cable into two cables with powerCON 32 connectors. The 13 AWG LEOPARD looping power cable connects a loudspeaker’s powerCON 20 AC loop output to the powerCON 20 AC input of an additional loudspeaker.



Power Splitter Adapter Cable (powerCON 32)

Part Number	Description
28.257.021.01	(EU) powerCON 32A splitter adapter cable <ul style="list-style-type: none">• (1) powerCON 32 female• (2) powerCON 32 male, 90 cm
28.257.021.02	(US) powerCON 32A splitter adapter cable <ul style="list-style-type: none">• (1) powerCON 32 female• (2) powerCON 32 male, 3 ft



LEOPARD Looping Power Cable (powerCON 20)

Part Number	Description
28.115.032.03	powerCON 20 looping power cable, 3 ft (1 m) <ul style="list-style-type: none">• (1) powerCON 20 male looping output• (1) powerCON 20 male