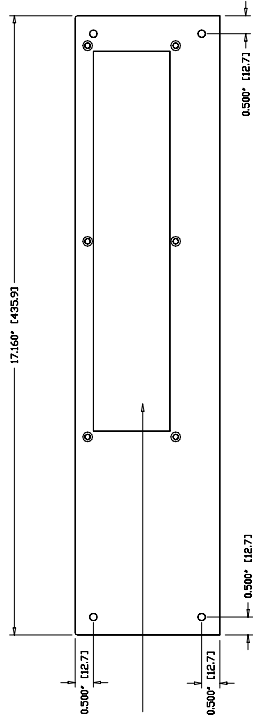
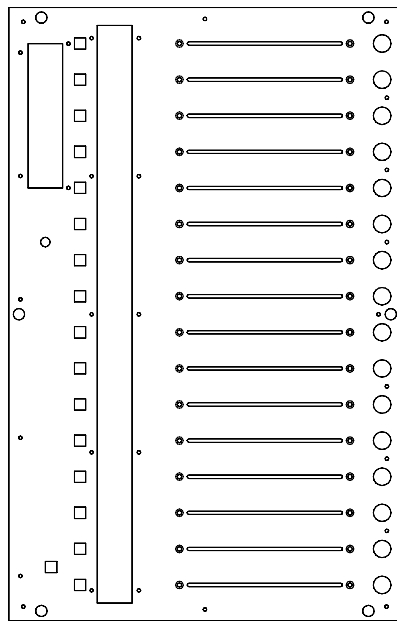


# Rear

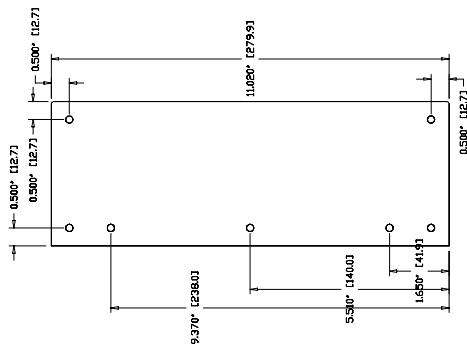


The 2 alternate Connector Panel locations

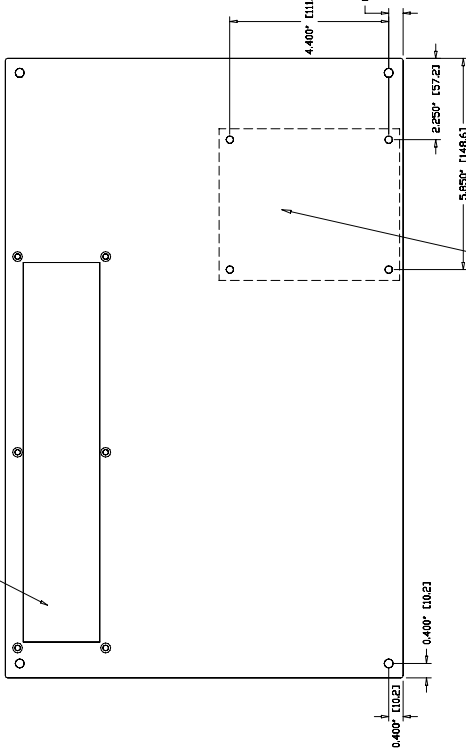
# Top



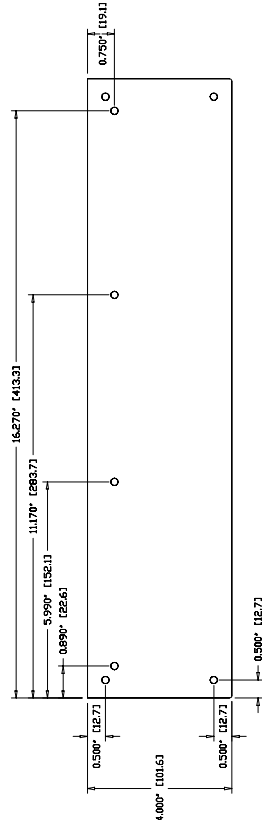
# Sides



# Bottom



Mounting Plate (CCD-MP) attachment location.



# Front



Level Control Systems www.levelcontrol.com 442-100 Kai Lake Rd. Vernon, BC, Canada Ph: 250-548-2558 Fax: 250-548-2688	Part#: CC2-F16 Name: Cue Console Z: Fader's module Design Date: 28 Dec 2002 Rev: B Sheet 1 of 1
<b>Mounting points:</b> Except for the top view, all the single circles shown, are holes that will accept 10-32 screws. Penetration should be no more than 7/32" or 22".	
<b>Environmental Specifications:</b>  <b>Approvals:</b> Pending CSA, CE, FCC <b>Operating Environment:</b> 0-40°C, (32-100°F) 5%-95% humidity, non-condensing, low-dust <b>Storage Environment:</b> 0-80°C, (32-175°F) 5%-95% humidity, non-condensing. <b>Power Requirements / Consumption:</b> 90-260 VAC, 47-63 Hz, 80W Max. <b>Weight:</b> 208 lbs, (94 Kg)	